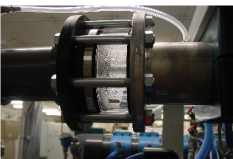




Maintenance at production systems hinder the work of production, decrease in circumstances, the productivity of business. Despite this fact, regular maintenance is a necessary criterion of preventive maintenance process.

In view of the problematic maintenance, especially with regard to a short down time, care is taken during the construction of the system to a service construction. So that the customer is easily able to carry out regular maintenance on our equipment on location.

In case of failure or malfunction of the system is a global service.



Servicing

Last Updated Tuesday, 17 February 2015 15:31

Our contact for you:

[Markus Grude](#)